

ELKO EP, s.r.o.
 Palackého 493
 769 01 Holešov, Vsetuly
 Czech Republic
 Tel.: +420 573 514 211
 e-mail: elko@elkoep.com
 www.elkoep.com

Made in Czech Republic

02-91/2016 Rev.:2



CRM-81J CRM-83J

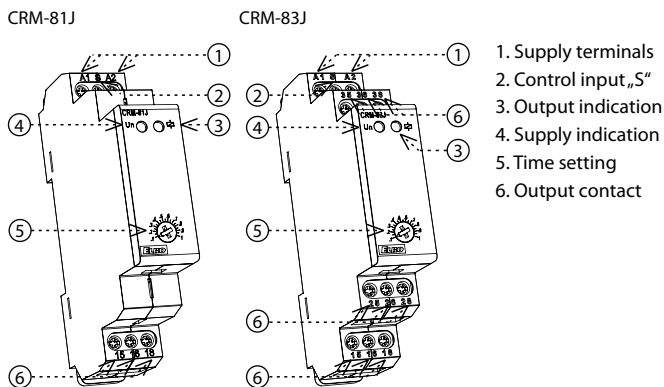
Single-function time relay



Characteristic

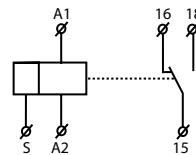
- single-function and single-time relay with possibility of fine time setting by a potentiometer (within the frames of a particular time range)
- suitable for applications where function and time requirements are known
- time switch, possible to be used for pump decay time after switching heating off, switching of fans
- choice of 3 functions:
 - 1) ZR - delay ON
 - 2) ZN - delay OFF
 - 3) BL - cycler 1:1
- every function can be controlled by supply voltage or control input
- choice of 6 time ranges:
 - (0.1 s - 1 s / 1 s - 10 s / 6 s - 60 s / 1 min - 10 min / 6 min - 60 min / 1 h - 10 hrs)
- universal supply voltage AC/DC 12 - 240 V or AC 230 V
- output contact: CRM-81J: 1x changeover / SPDT 16 A
CRM-83J: 3x changeover / 3PDT 8 A
- output indication: red LED
- 1-MODULE, DIN rail mounting

Description

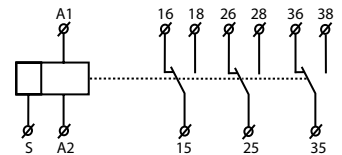


Symbol

CRM-81J



CRM-83J

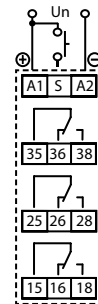


Connection

CRM-81J



CRM-83J



CRM-81J (230), CRM-83J (230):

Possibility to connect load onto controlling input:

It is possible to connect the load (e.g.: contactor) between terminals S-A2, without any interruption of correct relay function.

CRM-81J

Type of load	$\cos \varphi \geq 0.95$	M	M	AC5a uncompensated	AC5a compensated	HAL 230V	AC6a	AC7b	AC12
Mat. contacts AgNi, contact 16 A	250V / 16A	250V / 5A	250V / 3A	230V / 3A (690VA)	x	800W	x	250V / 3A	250V / 10A
Type of load	AC13	AC14	AC15	DC1	DC3	DC5	DC12	DC13	DC14
Mat. contacts AgNi, contact 16 A	250V / 6A	250V / 6A	250V / 6A	24V / 16A	24V / 6A	24V / 4A	24V / 16A	24V / 2A	24V / 2A

CRM-83J

Type of load	$\cos \varphi \geq 0.95$	M	M	AC5a uncompensated	AC5a compensated	HAL 230V	AC6a	AC7b	AC12
Mat. contacts AgNi, contact 8 A	250V / 8A	250V / 3A	250V / 2A	230V / 1.5A (345VA)	x	300W	x	250V / 1A	250V / 1A
Type of load	AC13	AC14	AC15	DC1	DC3	DC5	DC12	DC13	DC14
Mat. contacts AgNi, contact 8 A	x	250V / 3A	250V / 3A	24V / 8A	24V / 3A	24V / 2A	24V / 8A	24V / 2A	x

CRM-81J

CRM-83J

Function:	ZR - delay ON, ZN - delay OFF, BL - cyclor 1:1			
Supply terminals:	A1 - A2			
Voltage range:	AC/DC12-240V (AC 50-60 Hz)	AC 230 V/ 50-60 Hz	AC/DC12-240V (AC 50-60 Hz)	AC 230 V/ 50-60 Hz
Power input max. (apparent / loss):	AC 0.7-3 VA / DC 0.5-1.7 W	AC 12 VA / 1.3 W	AC 0.7-3 VA / DC 0.5-1.7 W	AC 12 VA / 1.9 W
Max. dissipated power (Un + terminals):	4 W		4.5 W	
Supply voltage tolerance:	-15%; +10%			
Supply indication:	green LED			
Time ranges:	0.1 s - 10 h (in 6 ranges)			
Time settings:	potentiometer			
Time deviation:	5 % - mechanical setting			
Repeat accuracy:	0.2 % - set value stability			
Temperature coefficient:	0.01% / °C, at =20 °C			

Output

Changeover contacts:	1x changeover / SPDT (AgNi / Silver Alloy)	3x changeover / SPDT (AgNi / Silver Alloy)
Rated current:	16 A / AC 1	8 A / AC1
Breaking capacity:	4000 VA / AC1, 384 W / DC	2000 VA / AC1, 192 W / DC
Inrush current:	30 A / < 3 s	10 A / < 3 s
Switching voltage:	250 V AC / 24 V DC	
Output indication:	red LED	
Mechanical life:	3x10 ⁷	
Electrical life (AC1):	0.7x10 ⁵	

Control

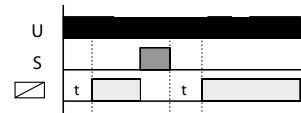
Consumption of input:	AC0.025-0.2VA/ DC 0.1-0.7W	AC 0.53 VA	AC0.025-0.2VA/ DC 0.1-0.7W	AC 0.53 VA
Load between S-A2:	No	Yes	No	Yes
Control. terminals:	A1-S			
Glow tubes connection:	No	Yes	No	Yes
Max. amount of glow lamps connected to controlling input:	x	max. 10 pcs*	x	max. 10 pcs*
Impulse length:	min. 25 ms / max. unlimited			
Reset time:	max. 150 ms			

Other information

Operating temperature:	-20 °C to +55 °C (-4 °F to 131 °F)	
Storage temperature:	-30 °C to +70 °C (-22 °F to 158 °F)	
Electrical strength:	4 kV (supply - output)	
Operating position:	any	
Mounting / DIN rail:	DIN rail EN 60715	
Protection degree:	IP40 from front panel / IP20 terminals	
Overvoltage cathogory:	III.	
Pollution degree:	2	
Max. cable size (mm ²):	solid wire max. 1x 2.5 or 2x 1.5 / with sleeve max. 1x 2.5 (AWG 12)	
Dimensions:	90 x 17.6 x 64 mm (3.5" x 0.7" x 2.5")	
Weight:	60 g (2.1 oz.)	85 g (3 oz.)
Standards:	EN 61812-1, EN 61010-1	

* measured with glow lamp 0.68 mA / 230 V AC

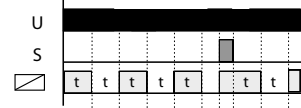
ZR - Delay ON



ZN - Delay OFF



BL - Cyclor 1:1



Note: the function ZR and ZN is controlled by supply voltage and control input ie. Once phase failure is detected and supply voltage is re applied. The relay automatically makes one cycle.

Warning

Device is constructed for connection for 1-phase main 230 V or AC 12-240 V and must be installed according to norms valid in the state of application. Connection according to the details in this direction. Installation, connection, setting and servicing should be installed by qualified electrician staff only, who has learnt these instruction and functions of the device. This device contains protection against overvoltage peaks and disturbances in supply. For correct function of the protection of this device there must be suitable protections of higher degree (A, B, C) installed in front of them. According to standards elimination of disturbances must be ensured. Before installation the main switch must be in position "OFF" and the device should be de-energized. Don't install the device to sources of excessive electro-magnetic interference. By correct installation ensure ideal air circulation so in case of permanent operation and higher ambient temperature the maximal operating temperature of the device is not exceeded. For installation and setting use screw-driver cca 2 mm. The device is fully-electronic - installation should be carried out according to this fact. Non-problematic function depends also on the way of transportation, storing and handling. In case of any signs of destruction, deformation, non-function or missing part, don't install and claim at your seller it is possible to dismount the device after its lifetime, recycle, or store in protective dump.